

CRIB SELECTION

Yu-City Fabric Sample





Crib Selection

Dreamy Comfort for Your Little One Tender Care for Baby's Delicate Skin!

At Yu-City, we understand the importance of comfortable sleep for your baby's growth and development. That's why we place special emphasis on the comfort of the fabric for our baby cribs. We have carefully chosen the finest knit fabric to provide your little one with an unparalleled soft and gentle touch. Moreover, those textiles are designed to avoid any irritation to your baby's delicate skin, ensuring a warm, secure, and stress-free slumber. We meticulously select only the best to deliver the ultimate sleep experience for your precious baby.

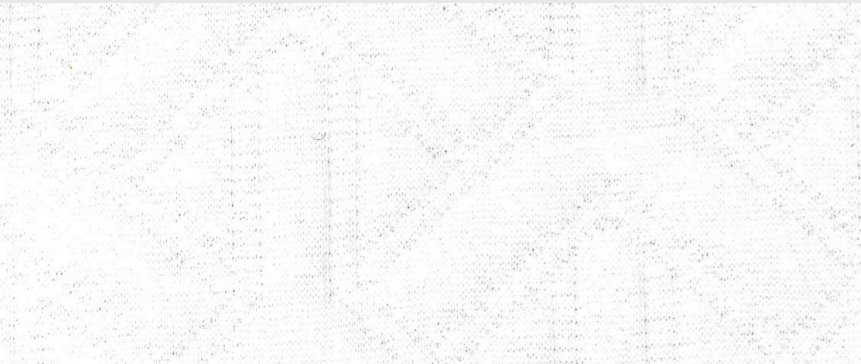
- 23KE084
- 23KJ190
- 23WF006
- 23KK155



Inlay Fabric

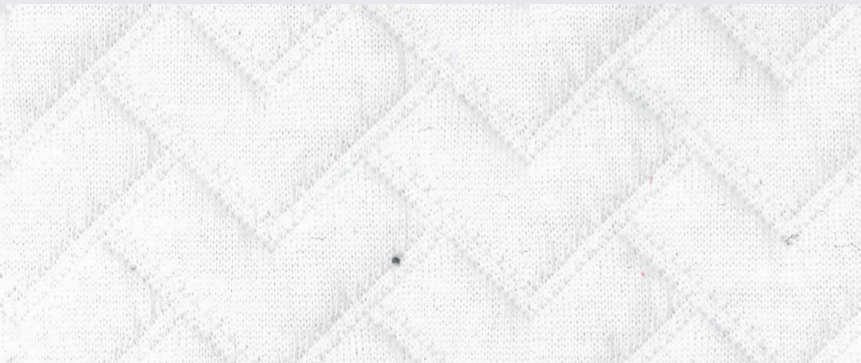
Crafting Unparalleled Comfort and Gentle Care for Your Baby

Inlay Fabric features a unique three-layer knitting structure, providing your baby with an exceptional soft and comfortable touch. Whether it's crib sheets, duvet covers, or baby clothes, our textiles are the warmest choice. With its quilted pattern, Inlay Fabric caresses every inch of your baby's skin. The remarkable warmth ensures your little one enjoys a cozy and delightful dreamy time in these adorable bedding products.



BCTW - 23KP136

CMPSTN : 100% Poly
 DESCRIPTION : T40'S + T150D
 WIDTH/WEIGHT : 59" 255SQM
 FINISH : P/D
 REMARK : Inlay



BCTW - 23KP136

CMPSTN : 100% Poly
 DESCRIPTION : T32'S + T300D + T150D
 WIDTH/WEIGHT : 60" 325SQM
 FINISH : P/D
 REMARK : Inlay



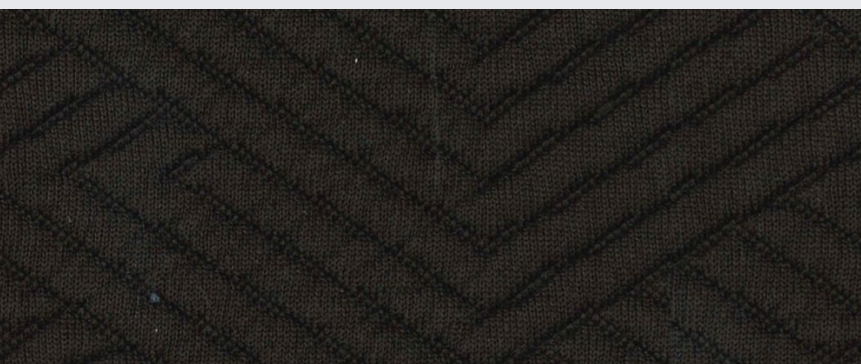
BCTW - 23KJ190

CMPSTN : 95% Poly 5% Spandex
 DESCRIPTION : TOP 75D
 WIDTH/WEIGHT : 65" 320SQM
 FINISH : P/D
 REMARK : Inlay



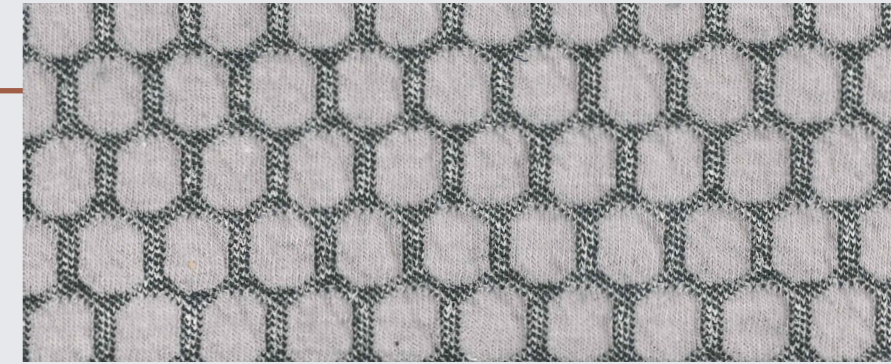
BCTW - 23KD040

CMPSTN : 60% Poly 40%Viscose
 DESCRIPTION : T150D + T100D + R40'S
 WIDTH/WEIGHT : 61" 220SQM
 FINISH : P/D
 REMARK : Two-tone



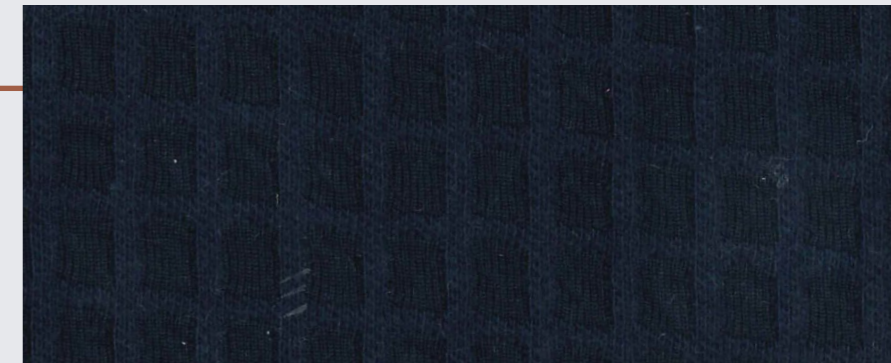
BCTW - 23KE084

CMPSTN : Ocean Recycle Poly / Recycle Poly / Spandex
 DESCRIPTION : RE-T150D + RE-T300D+T75D +SP40D
 WIDTH/WEIGHT : 52" 319SQM
 FINISH : P/D
 REMARK : Inlay



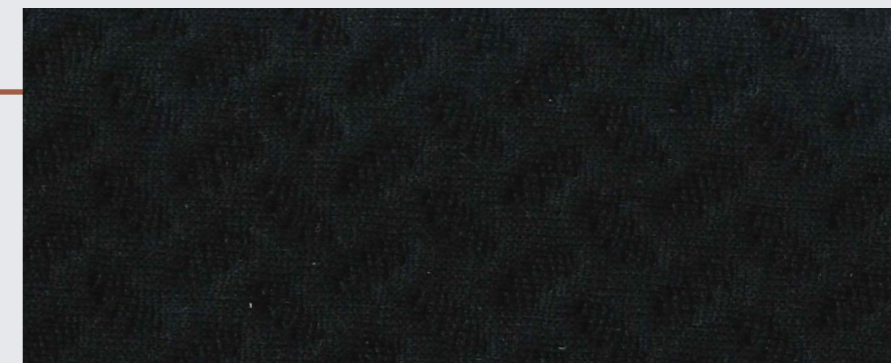
BCTW - 23KJ185

CMPSTN : 60% Poly 35% Viscose 5% Spandex
 DESCRIPTION :
 WIDTH/WEIGHT : 59" 280SQM
 FINISH : P/D
 REMARK : Inlay , Two-tone



BCTW - 23KK157

CMPSTN : Poly / Cotton
 DESCRIPTION : T100D + C32'S
 WIDTH/WEIGHT : 59" 215SQM
 FINISH : P/D
 REMARK : Check



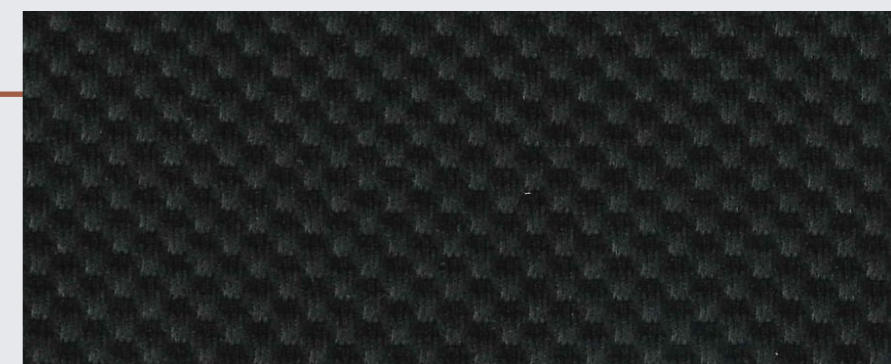
BCTW - 23KJ198

CMPSTN : 95% Poly 5%Spandex
 DESCRIPTION :
 WIDTH/WEIGHT : 59" 280SQM
 FINISH : P/D
 REMARK : Inlay



BCTW - 23KK157

CMPSTN : 100% Poly
 DESCRIPTION : T75D
 WIDTH/WEIGHT : 59" 200SQM
 FINISH : P/D
 REMARK : Inlay



BCTW - 23KJ184

CMPSTN : 95% Poly 5%Spandex
 DESCRIPTION :
 WIDTH/WEIGHT : 59" 280SQM
 FINISH : P/D
 REMARK :

Velvet & Corduroy

Unmatched Softness and Tender Care!

Our velvet fabric, made with ultra-fine yarns, presents your products with an extraordinary touch of luxury, providing your baby with gentle and soft care. The superb texture of our velvet fabric enhances the cozy comfort of your home's seating, crib bedding, and pillows. Whether it's knitted or woven, we can provide you with the most satisfactory options. Make your baby's selection of the highest quality material begin with our velvet fabric!

Fleece Fabric

Heartwarming Fabric Tailored for Your Baby's Sweet Moments!

Yu-City's fleece fabric not only brings warmth but also comes in a variety of patterns to suit your preferences.



23WP008

22KP051

23WP009
23KD002



BCTW - 23WF004

CMPSTN : Poly / Nylon
DESCRIPTION : T250D * T250D + N300D
WIDTH/WEIGHT : 57" 265SQM
FINISH : P/D
REMARK : Corduroy

BCTW - 23KP145

CMPSTN : 100% Poly
DESCRIPTION : T100D + T100D
WIDTH/WEIGHT : 65" 219SQM
FINISH : P/D
REMARK : Velvet

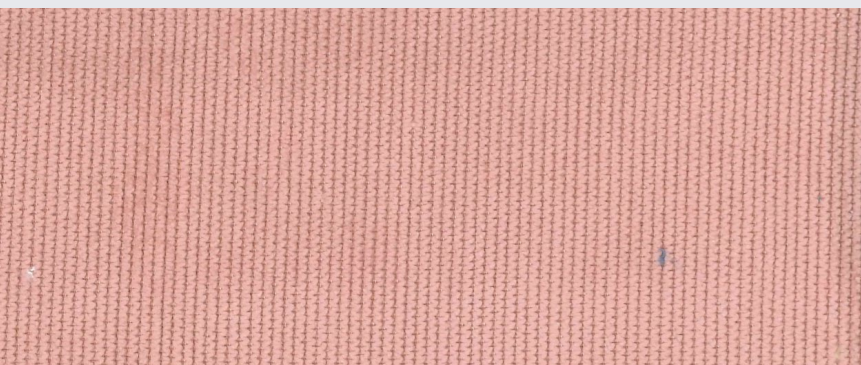
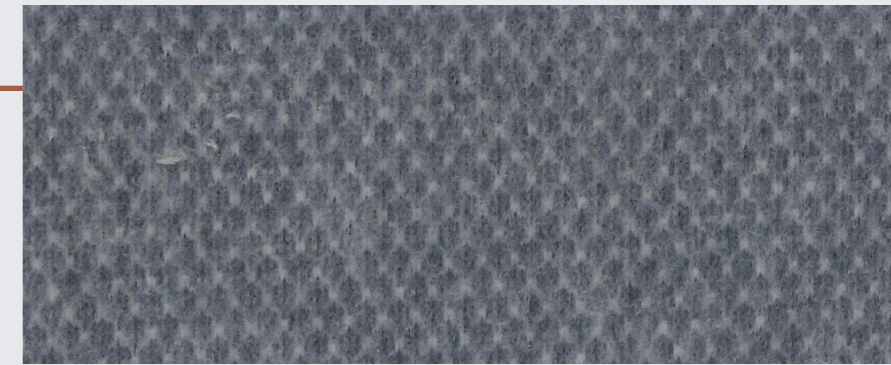


BCTW - 23WF006

CMPSTN : Poly / Nylon
DESCRIPTION : T150D * T150D + N320D
WIDTH/WEIGHT : 59" 270SQM
FINISH : P/D
REMARK : Corduroy

BCTW - 23KD043

CMPSTN : Poly / CD
DESCRIPTION : T300D + T100D + T150D
WIDTH/WEIGHT : 65" 300SQM
FINISH : P/D
REMARK : Fleece

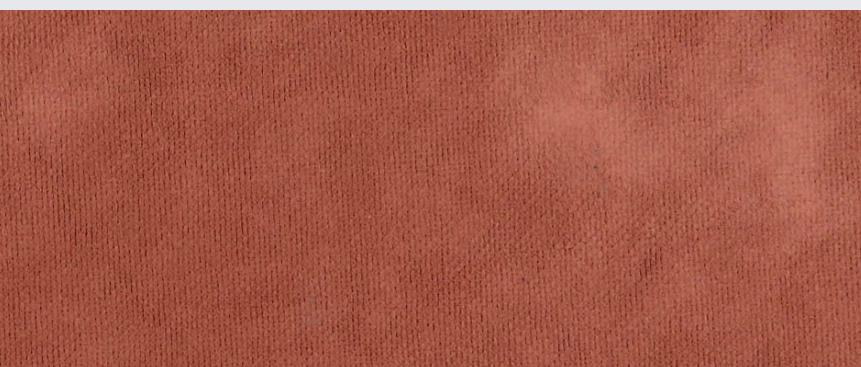


BCTW - 23WF005

CMPSTN : Poly / Nylon
DESCRIPTION : T150D * T150D + N320D
WIDTH/WEIGHT : 59" 205SQM
FINISH : P/D
REMARK : Corduroy

BCTW - 23KD044

CMPSTN : Poly / CD
DESCRIPTION : T150D + T75D + T150D
WIDTH/WEIGHT : 58" 280SQM
FINISH : P/D
REMARK : Fleece

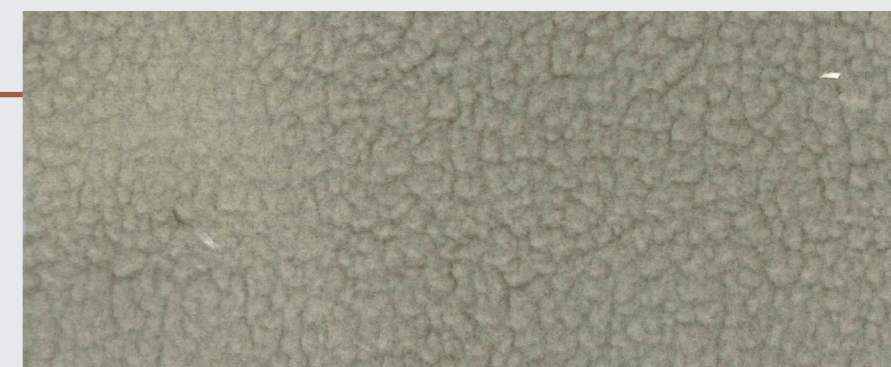


BCTW - 23KJ183

CMPSTN : 96% Poly / 4% Spandex
DESCRIPTION : T100D + SP30D
WIDTH/WEIGHT : 61" 320SQM
FINISH : P/D
REMARK : Corduroy

BCTW - 23KP144

CMPSTN : 100% Poly
DESCRIPTION : T150D
WIDTH/WEIGHT : 59" 230SQM
FINISH : P/D
REMARK : Fleece



BCTW - 23KJ205

CMPSTN : Poly / Cotton / Spandex
DESCRIPTION : C32'S + T/OP75D + T100D
WIDTH/WEIGHT : 55" 315SQM
FINISH : P/D
REMARK : Corduroy

BCTW - 23KD042

CMPSTN : 100% Poly / CD
DESCRIPTION : T75D + CD75D + T75D
WIDTH/WEIGHT : 60" 160SQM
FINISH : P/D
REMARK : Fleece



Advisory Support

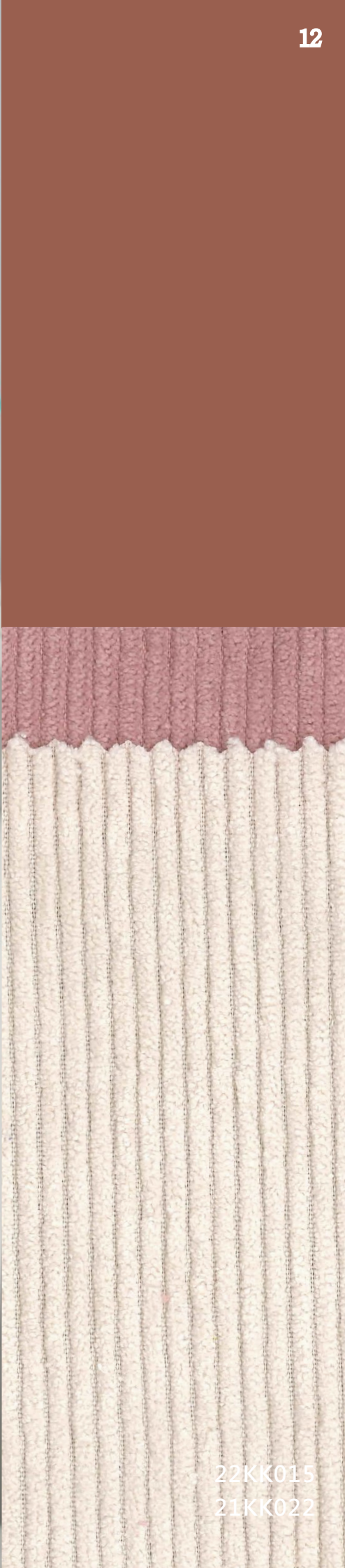
We share the latest industrial trends with our clients. We are capable of product marketing, story telling and business researching. Being a supplier is not our goal. What we are looking for is to be a part of your team. This is more than one-stop service, we cover all.

Full Services

We share the latest industrial trends with our clients. We are capable of product marketing, story telling and business researching. Being a supplier is not our goal. What we are looking for is to be a part of your team. This is more than one-stop service, we cover all.



23WP006
23KK015



22KK015
21KK022



Yu-City Not Just Fabric, But Design

游城實業股份有限公司

YU-CITY IND. CO., LTD.

24158 新北市三重區新北大道二段 260 號 12 樓

12F, No. 260 Sec. 2, New Taipei Blvd., Sanchong District

New Taipei City, Taiwan (R.O.C.)

TEL: +886-2-29953199

FAX : +886-2-29959918

