



Yu-City
2022 Q1Q2
New Development



Content

Chapter 1

Repurposed

重新利用 P.3

FABRIC TREND

| | |
|--------------------------------|------|
| SAYA | P.5 |
| Recycle Fabric with 302FR FREE | P.9 |
| Recycle Knitting Fabric | P.15 |
| Recycle Woven Fabric | P.17 |

Chapter 2

Leveragethe -local

在地織造 P.19

FABRIC TREND

| | |
|-------------------------------------|------|
| Seawool | P.21 |
| Tea Charcoal | P.25 |
| S.Café | P.27 |
| Bamboo Charcoal Coconut Charcoal | P.31 |
| Biodegeradable Fabric | P.33 |
| Bio-based Fabric | P.35 |
| Natural material | P.39 |

Chapter 3

Reorganization

定義革新 P.41

FABRIC TREND

| | |
|-------------------------|------|
| HDPE | P.43 |
| 302FR FREE Fabric | P.47 |
| Regular Woven Fabric | P.49 |
| Regular Knitting Fabric | P.51 |



YU-CITY

FABRIC
TREND
BOOK

#Repurposed

Earth provides enough to satisfy every man's needs, but not every man's greed.

- Karamchand Gandhi

Climate change issues caused by petrochemical materials continuously emerged from our daily life activities, making reduction of plastic waste and recycling a must and irreversible trend. In fact, there is no time to wait further and we must take immediate action.

/ SAYA Yarn Fabric
/ Recycle Fabric & 302FR FREE
/ Recycle Fabric





SAYA Now is made from 100% post-consumer recycled materials, including recycled plastic water and soda bottles.

Also, SAYA partner with independent verifiers to hold ourselves accountable to the highest sustainability standards. Independent verifications provide assurance to our customers that our products meet or exceed rigorous global standards.



SAYA

made with 100% SAYA Advanced Recycled Fiber

Better performance in strength and tenacity. Brighter color vibrancy and deeper saturation. Bluesign, GRS and good karma certified.

- 43.6-76.3% Reduction in CO₂
- 55.5-86% Energy Saving
- 80 Bottles/Kg Saved from landfill

SAYA renews garments, offcuts, overstocks and over 75 billion used bottles into durable performance fibers each year.

SayaRenew.com



YCTW-22KE020

100%SAYA
60" 290G/Y



YCTW-22KE010

100%SAYA
58" 220G/Y

SAYA



Recycled plastic bottles into Yarn

↓ Reduce 78% CO2e



Partner with independent verifiers



Recycle Fabric with 302FR FREE

Aiming to lessen usage of fire retardant chemicals and reduce emission of hazardous substance caused by dyeing process and heavy metals, Yu-City developed many special structured car seat fabrics with recycled yarn content and performance tested passing FMVSS302 standard.

YCTW-22KE016

100%RE-T
61" 173GSM



YCTW-22KE008

100%RE-T
58" 234G/Y



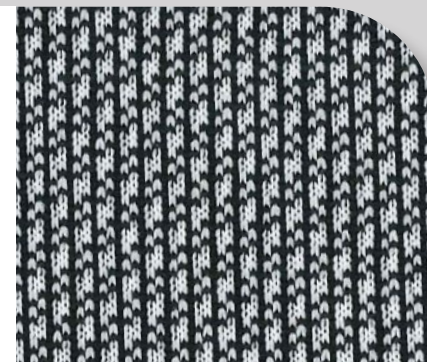
YCTW-22KE015

100%RE-T
61" 170GSM



YCTW-22KE017

100%RE-T
60" 161GSM



YCTW-22KE014

100%RE-T
62" 170GSM



YCTW-22KE018

100%RE-T
63" 172GSM

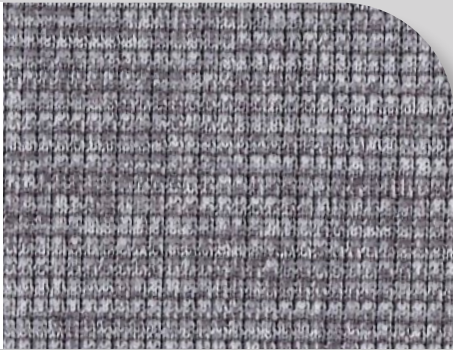




Recycle Fabric with 302FR FREE

**YCTW-
22KE001**

100%RE-T
58" 280G/Y



**YCTW-
22KE011**

100%RE-T
58" 220G/Y



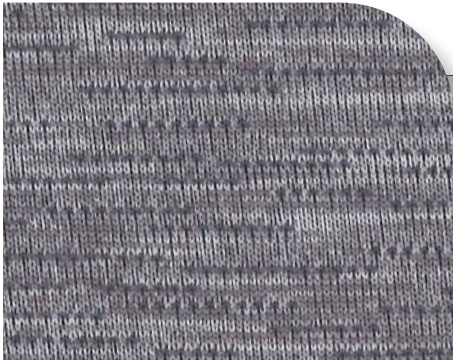
**YCTW-
22KE009**

100%RE-T
58" 200G/Y



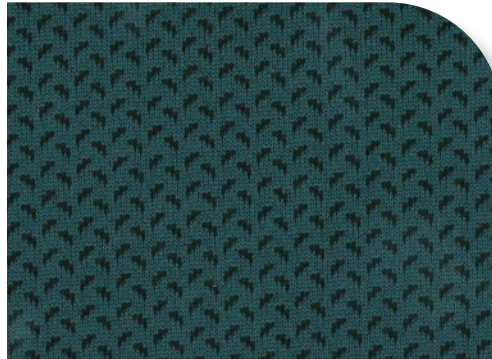
**YCTW-
22KE002**

100%RE-T
58" 230G/Y



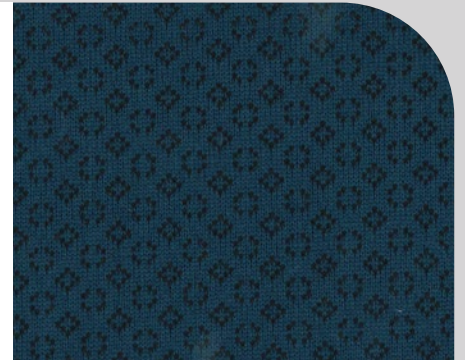
**YCTW-
22KE034**

100%RE-T
62" 274G/Y



**YCTW-
22KE037**

100%RE-T
59.5" 262G/Y



**YCTW-
22KE003**

100%RE-T
58" 232G/Y



**YCTW-
22KE035**

100%RE-T
62" 248G/Y



**YCTW-
22KE020**

100%RE-T
60" 161GSM



Flame retardant



Recycled plastic
bottles into Yarn

↓ Reduce 78% CO₂e



↓ Burning Rate
<102 mm/min



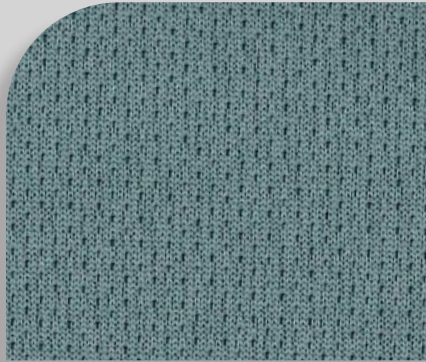
YCTW-22KE019

100%RE-T
58" 234G/Y



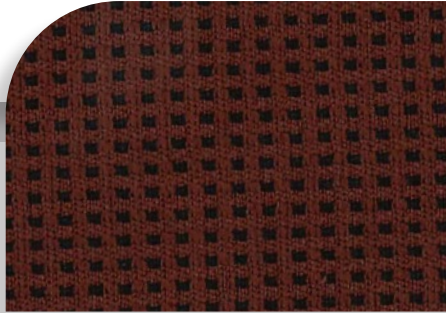
YCTW-22KE029

100%RE-T
60.5" 152GSM



YCTW-22KE031

100%RE-T
60" 211G/Y



YCTW-22KE030

100%RE-T
60.5" 163GSM



YCTW-22KE022

100%RE-T
58" 230G/Y



YCTW-22KE021

100%RE-T
60" 300G/Y



YCTW-22KE036

100%RE-T
61.5" 290G/Y



Recycle Knitting Fabric

More than a million plastic bottles are purchased every minute (that's about 20,000 bottles per second).

According to the analysis, recycled polyester results in a reduction in energy use by 45% to 85%, and a reduction in global warming potential of 24% to 76% compared to virgin polyester.

By using post-consumer materials for our recycle fabric we create demand for the materials and give them a new life.



**YCTW-
22WE014**

100%RE-T
58" 234G/Y



**YCTW-
22WE015**

100%RE-T
60" 161GSM



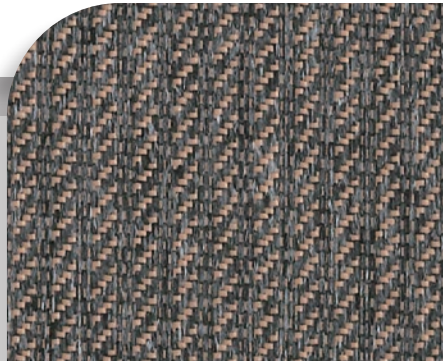
**YCTW-
22WE016**

100%RE-T
63" 172GSM



**YCTW-
22WE013**

50%RE-T + 50%T
59" 157GSM



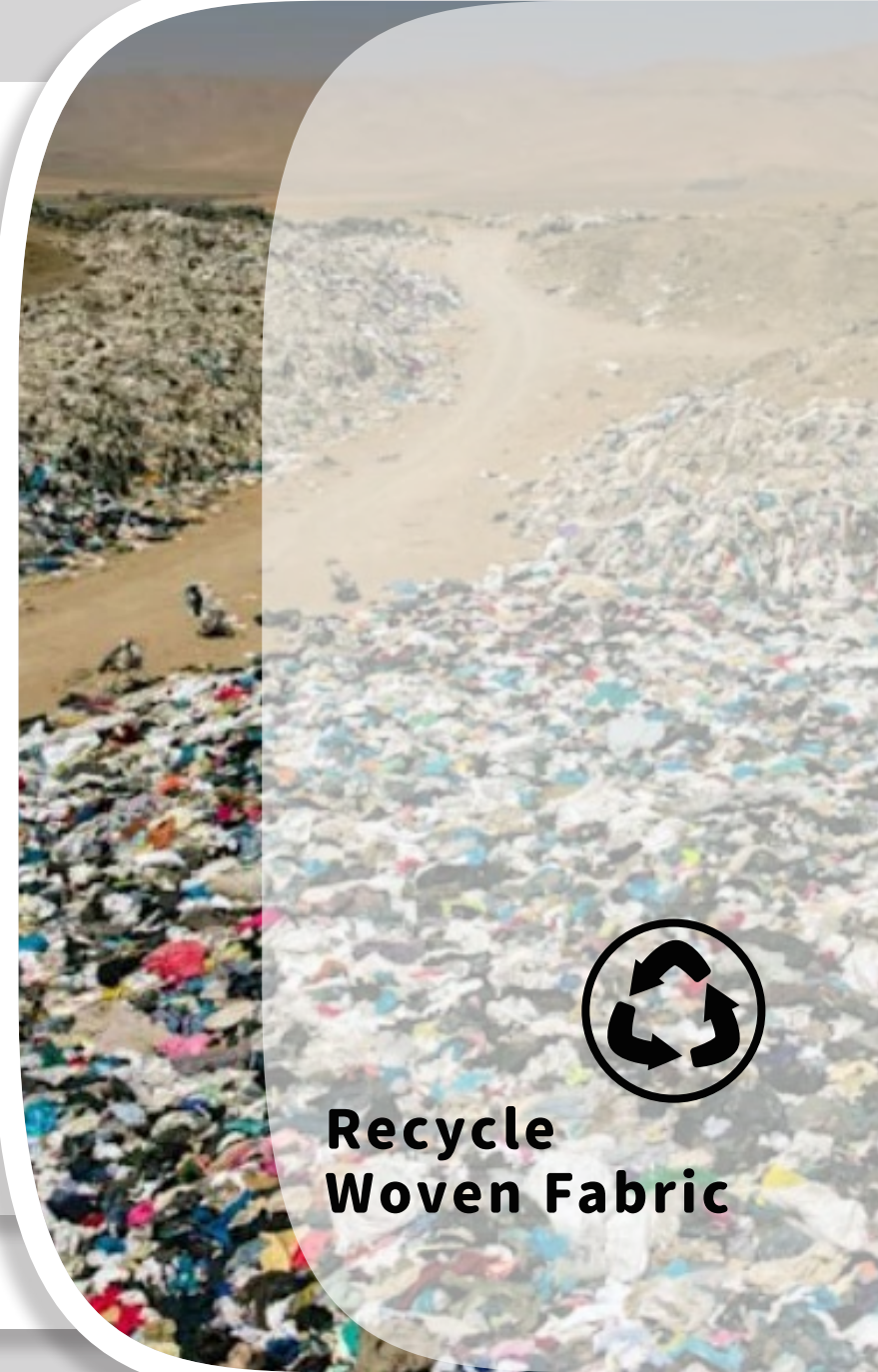
**YCTW-
22WE009**

T + RE-CD
61" 170GSM



**YCTW-
22WE012**

73%RE-T + 27%T
55" 220GSM



**Recycle
Woven Fabric**

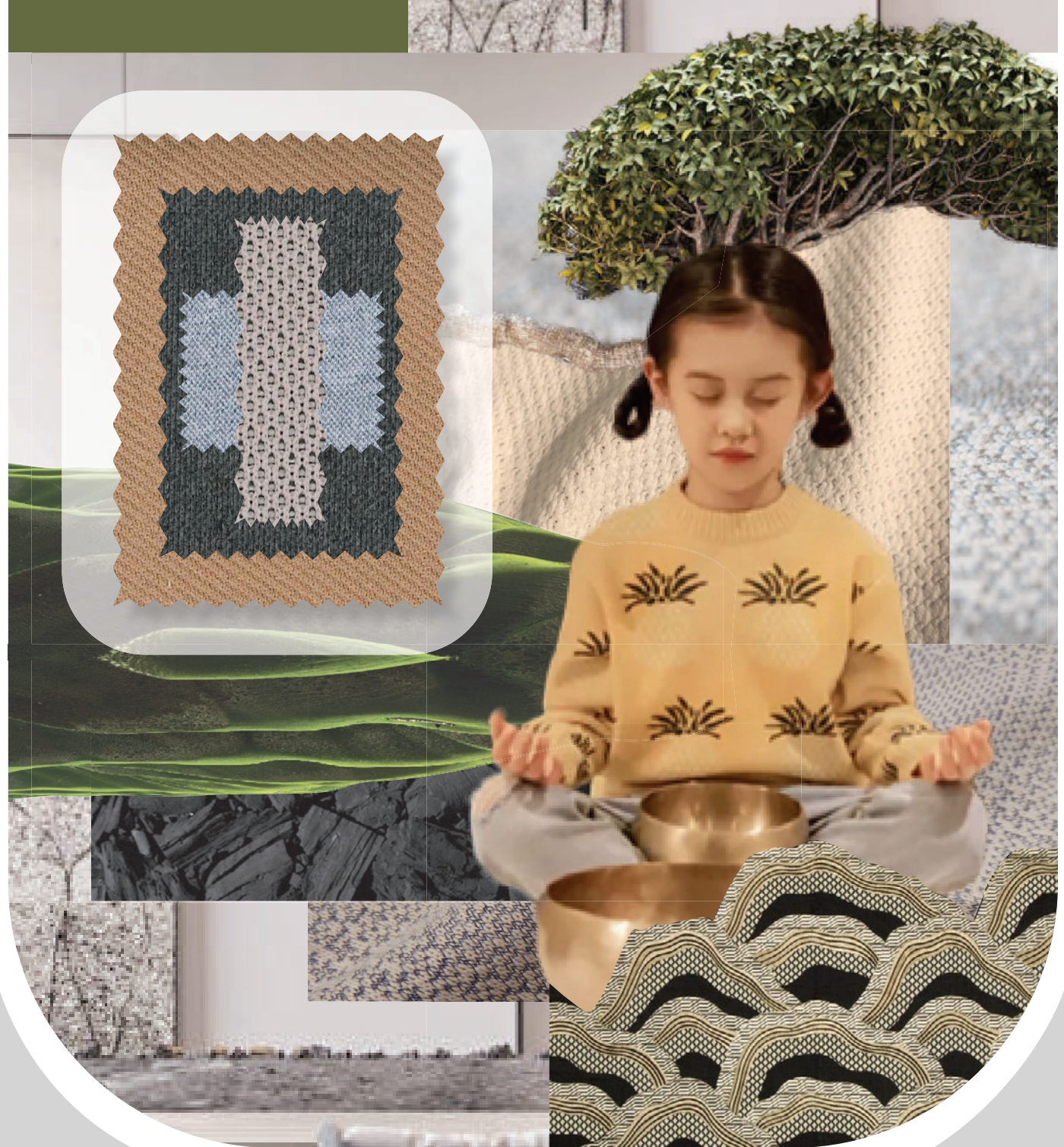
#Leveragethelocal

Only if we understand can we care. Only if we care will we help. Only if we help shall all be saved.

-Jane Goodall

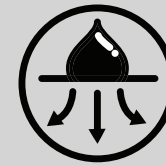
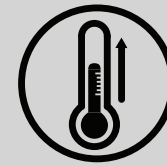
People have given more importance nowadays to Transitioning to Low-Carbon Consumption Habits, focusing more on recycled and sustainable natural fiber materials, and having more positive behavior to conserve natural resources.

- / Seawool Fabric
- / Tea charcoal Fabric
- / Biodegradable Fabric
- / Coffee charcoal Fabric
- / Bamboo Charcoal
- / Natural material yarn



Seawool -Oyster Shells Fabric

There're 160,000,000 KG of the abandoned oyster shells are discarded per year in Taiwan. By using Seawool, an innovative yarn created with upcycled oyster shells, they're helping to close a loop that's had a huge impact on the coastal communities we love.



YCTW-
22KE012

75%Seawool
+ 25%T
61" 210GSM



YCTW-
22WE010

28%T + 12%SP
60%RE-T
(28%Seawool)
52" 203GSM



YCTW-
22KE013

25%Seawool
+ 75%T
60" 201GSM



YCTW-
22WE011

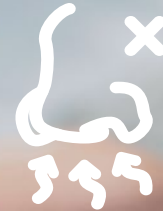
51%T + 12%SP
27%Seawool
61" 210GSM



Seawool



↓ Reduce abandoned oyster shells



Odor control



Recycled plastic bottles into Yarn

↓ Reduce 78% CO₂e



Tea Charcoal

As a significant representative of Eastern culture, tea symbolizes the modesty and subtle connotations of Chinese nation, just like tea ceremonies are widely known for its elegance and simplicity. Tea charcoal is obtained by recycling used tea leaves, and giving them a second life span by carbonizing under special processing, thus achieving a thermal property of heat accumulation with deodorization effect.

YCTW-
22KT001

60%T
+ 40%Tea Charcoal
60" 240G/Y

YCTW-
22KT002

60%T
+ 40%Tea Charcoal
60" 270G/Y

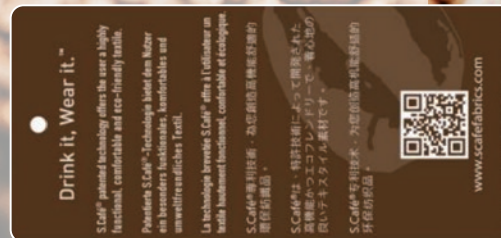


S.Café -Coffee Charcoal Yarn

Habit of drinking coffee began to spread across Europe. It's not only a beverage but also a way of living.

The life cycle of coffee bean extends with S.Café technology.

S.Café fabric provides users remarkable comfort, odor control and fast drying.



YCTW-
22KE023

40% S.Café
+ 60% RE-T
60" 173GSM



YCTW-
22KE025

50% S.Café
+ 50% RE-T
58" 180GSM



YCTW-
22KE024

54% S.Café
+ 46% RE-T
60" 175GSM



S.Café



↑ Extend The life cycle
of coffee been



↑ Fast drying

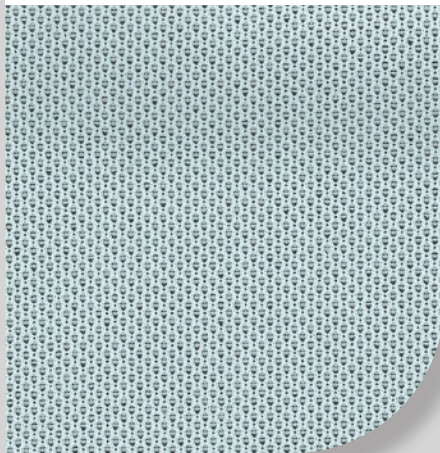


Bamboo Charcoal

The bamboo charcoal is created by heating bamboo at a high temperature and then the charcoal itself is processed and mixed in with fabrics as part of the growing field of nanotechnology. It's benefits including superior absorption & deodorizing ability, far infrared radiation properties and thermal regulation.

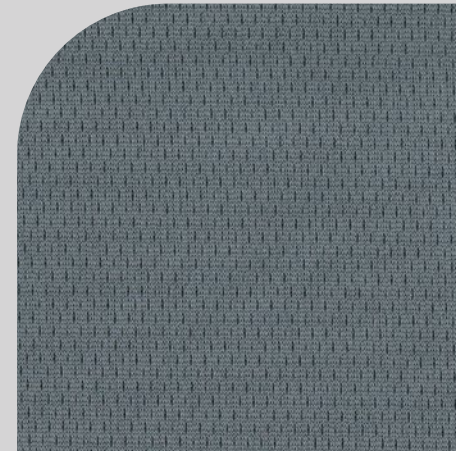
YCTW-22KB001

T + Bamboo Charcoal
60" 260G/Y



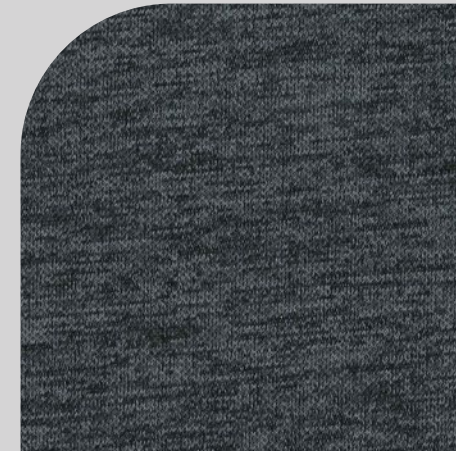
YCTW-22KB002

T + Bamboo Charcoal
60" 230G/Y



YCTW-22KC001

72%T
+ 28%Tea Charcoal
60" 290G/Y



YCTW-22KC002

75%T
+ 25%Tea Charcoal
60" 410G/Y



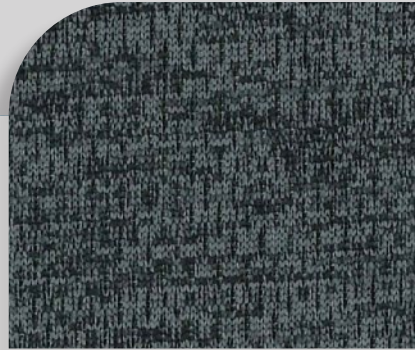
Coconut Charcoal

It was found that coconut shells can be used to produce coconut charcoal, so these wastes can not only be recycled and fully used, but positive benefits of environmental protection can also be achieved. The coconut-charcoal in the fibers forms a porous surface on the fabric's surface, and can absorb odors, therefore having such functions as humidity prevention, deodorizing, anti-UV, etc



YCTW-22BD006

100%RE-T
(100%GreenOne)
70" 270G/Y



YCTW-22BD005

100%RE-T
(50%GreenOne
+50%RE-T)
60" 260G/Y



YCTW-22BD001

100%T
(100%BioPro)
60" 270G/Y



YCTW-22BD002

100%T
(100%BioPro)
60" 210G/Y



YCTW-22BD003

100%T
(100%BioPro)
60" 260G/Y



YCTW-22BD004

100%T
(100%BioPro)
70" 270G/Y



GREENONE IS AN ANAEROBIC BIODEGRADABLE POLYESTER. IT ENABLES GARMENTS TO DECOMPOSE QUICKLY AND TURN INTO RICH SOIL UNDER LANDFILL OR IN THE OCEAN WHEN DISCARDED.

- Environmentally friendly.
- Cradle to cradle.
- Clothes can be cared for in their usual manner.
- Keep the same properties as virgin polyester.
- Compatible with bottle recycled technology.

GREENONE 生态纤维有限公司
www.greenone.com.cn

BioPro enhances the biodegradability of polyester filament by increasing the amount of hydrophilicity.

Allows microbes to grow and to consume C-C bonds within the polyester filament structure at a macromolecular level.



Biodegradable Yarn

Biodegradable fabrics are those fabrics can be disintegrated into its natural base elements by bacteria, fungi, or some other biological process. Thanks to our new technics, the fabrics we've developed came without any issue with strengths.



YCTW-
22KE038

100%BioGreen
60" 200G/Y



YCTW-
22KE039

100%BioGreen
60" 230G/Y



BioGreen -Bio-based Poly

Bio-Green is a fully renewably sourced polyester made from 30%Bio-EG and 70%PTA. The Bio-EG Comes from Molasses by-product of Producing Sugar. It not only reduce 25% CO2 emission but also keep the same properties as virgin PET.

BioGreen



Made from Bio-EG

↓ Reduce 25% CO₂e



Natural material Yarn

In recent years, environmental protection has undoubtedly become a trend, and same with fabrics made of natural materials. Staple fiber textiles are also favored by many due to its unique hand feel with touch of wool, accompanied by other functions of natural fibers.



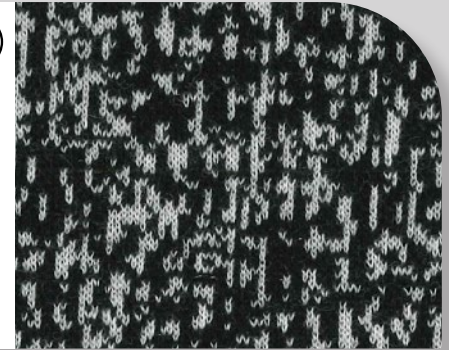
YCTW-22KK004

77.1%T+14.9R
+8%SP
55" 306GSM



YCTW-22KK003

39%T+36.5%A
+16.5%R
+5%W+3%SP
54" 292GSM



YCTW-22KK006

71%T+25%R
+4%SP
57" 285GSM



YCTW-22KK005

35.7%A+8.6%N
+33.6%T+4%W
+18.1%R
62" 232GSM



YCTW-22WK001

55%T+45%TC
58" 242GSM



YCTW-22KK007

70%T+27%R
+3%SP
58" 200GSM



YCTW-22WK004

T+R
59.5" 276GSM



#Reorganization

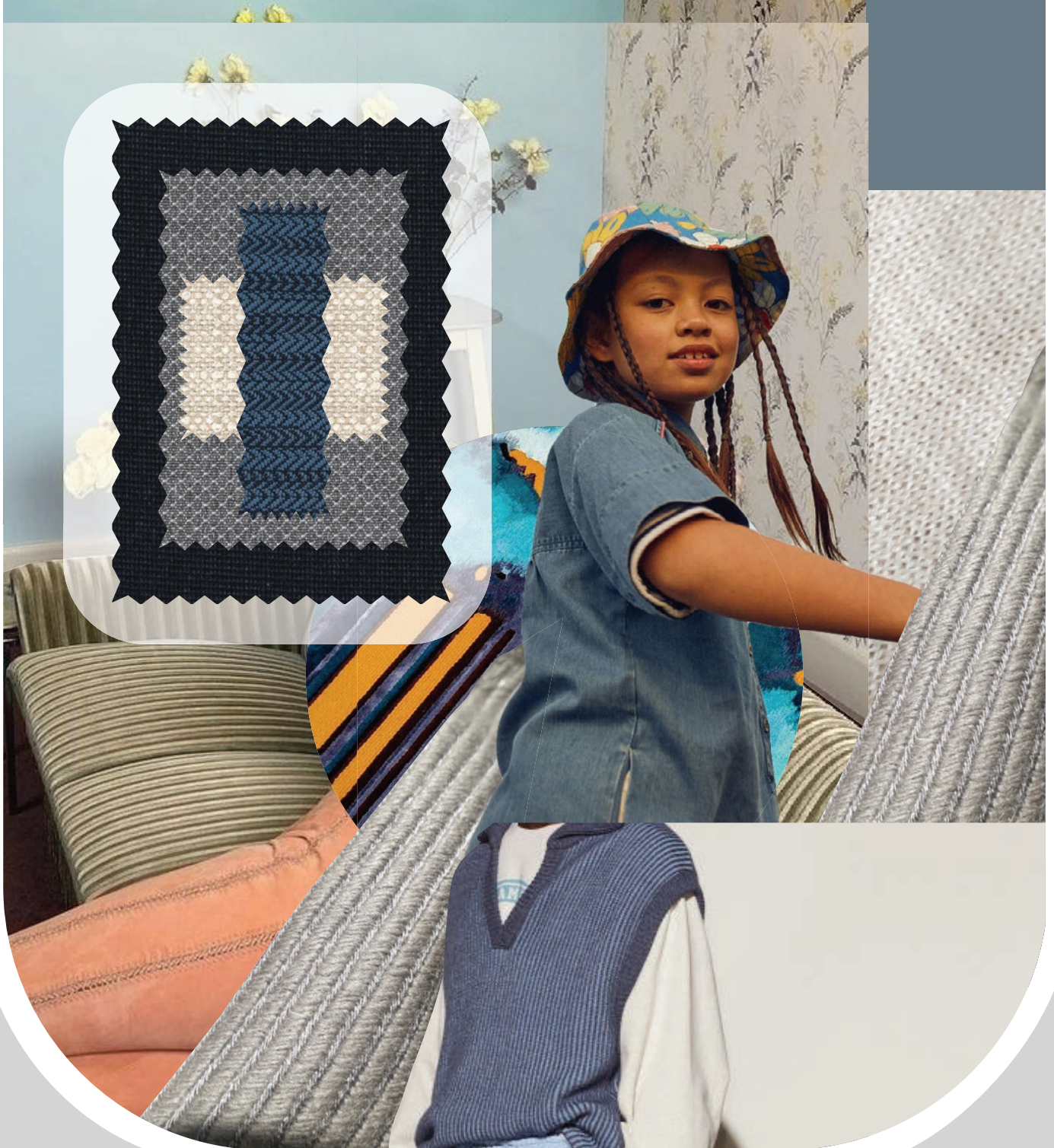
Progress is the activity of today and the assurance of tomorrow.

-Emerson

Based on surveys and statistics gathered, fabrics with special functions and unique textured patterns remain to be best choice and ideal pick of massive consumers. This is also why Yu-City is continuously developing more high quality fabric options to meet our brand client needs.

我們所提供的解決方案：

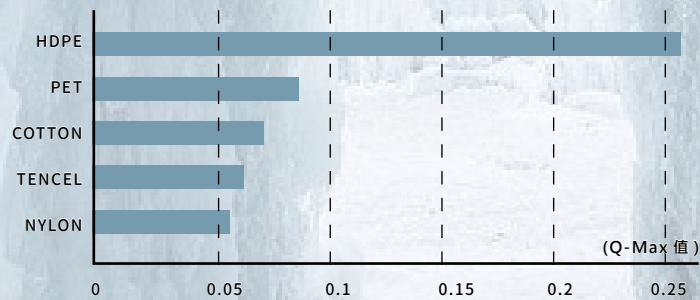
- / 302FR Free Fabric
- / HDPE Fabric
- / Regular Knitted
- / Regular Woven





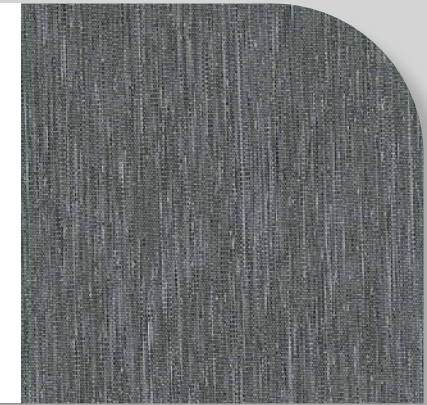
HDPE

High Density Poly Ethylene (HDPE) is a polyethylene yarn characterized by instant cooling function. It has fast conductivity of heat and absorbs body heat during skin contact, resulting to rapid cooling sensation.



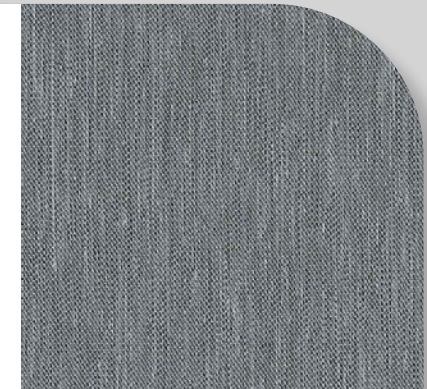
YCTW-
22WL001

T/CD + HDPE
52.5" 122GSM



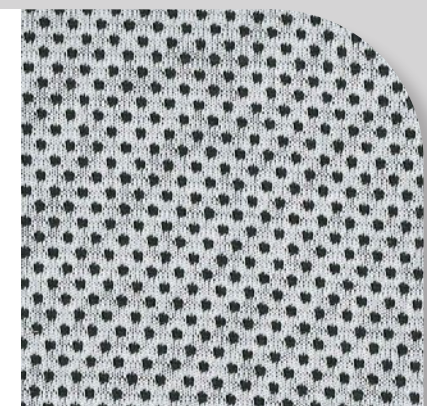
YCTW-
22WL002

T/CD + HDPE
50.5" 133GSM



YCTW-
22KL001

55%T
+ 45%HDPE
48" 240G/Y



HDPE



Fast Cooling
↑ Q-Max>0.23

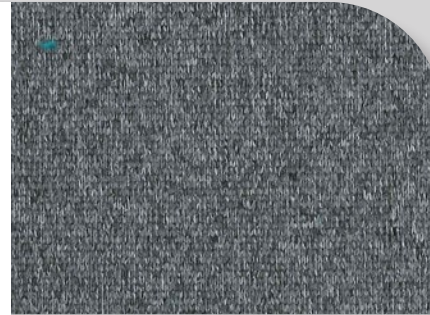


302FR FREE Fabric

Aiming to lessen usage of fire retardant chemicals and reduce emission of hazardous substance caused by dyeing process and heavy metals, Yu-City developed many special structured car seat fabrics with performance tested passing FMVSS302 standard.

YCTW-22KD003

100%T
58" 315G/Y



YCTW-22KD005

100%T
58" 300G/Y



YCTW-22KJ014

T/SP
62" 255G/Y



YCTW-22WP025

100%T
(10%Cozytec)
56" 170GSM



YCTW-22KD004

100%T
60" 200G/Y



YCTW-22KD006

100%T
60" 250G/Y



YCTW-22KD009

100%T
56" 120GSM



Regular Woven Fabric

YCTW-22WP023

100%T
(84%Cozytec)
58" 139GSM



YCTW-22WP026

100%T
(20%Cozytec)
58" 220GSM



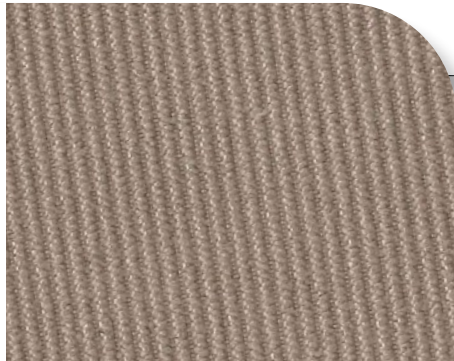
YCTW-22WK002

100%T(T+SPUN)
58.5" 203GQM



YCTW-22WP024

100%T
(31%Cozytec)



YCTW-22WP021

100%T
59" 231GSM



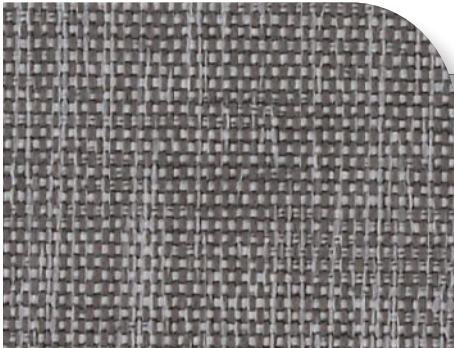
YCTW-22WK003

100%T(T+SPUN)
55.6" 192G/Y



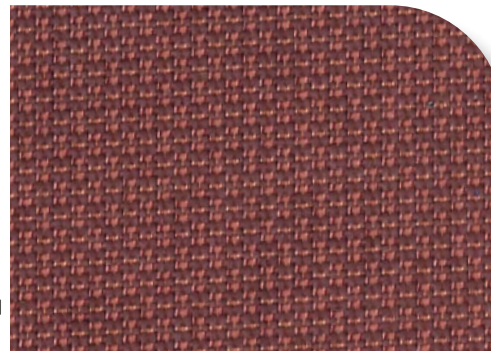
YCTW-22WD008

100%T
55.5" 240SQM



YCTW-22WP022

100%T
58.8" 230GSM



YCTW-22WD007

100%T
59.5" 355SQM
@110NTD/Y



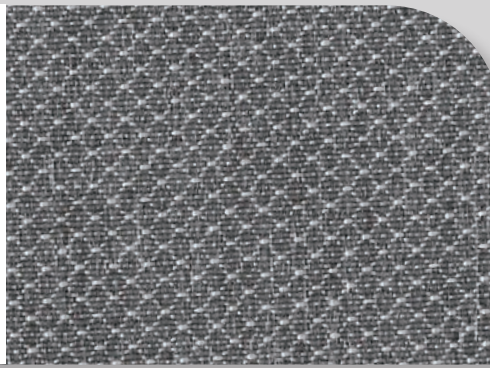
Regular Knitting Fabric

YCTW-22WD001



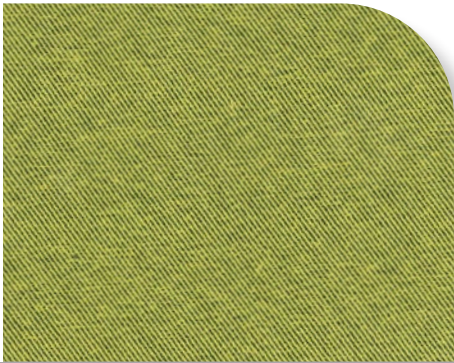
100%T
59.5" 300G/Y

YCTW-22WD006



100%T
58.8" 221SQM

YCTW-22WD010



100%T
58" 161SQM

YCTW-22WD011



100%T
59" 207SQM

YCTW-22WD012

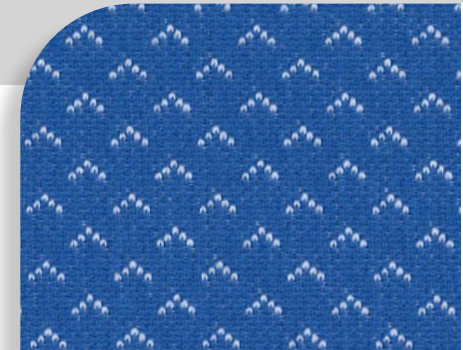


100%T
60" 154SQM



YCTW-22NS003

100%TopFresh
(可染氧化鋅, 防霉)
58" 220G/Y



YCTW-22KD007

100%T
60" 250G/Y

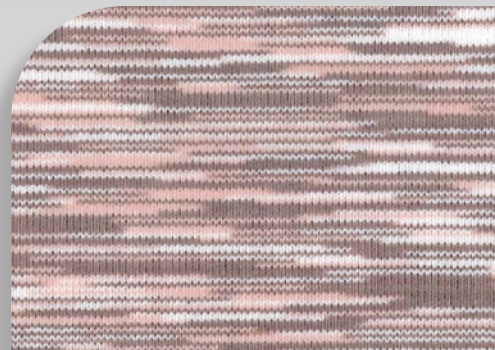
YCTW-22KD008

100%T
60" 230G/Y

Regular Woven Fabric

YCTW-22KJ039

N/SP
60" 330G/Y



YCTW-22KD002

100%T
58" 215G/Y



YU-City

Your best textile designer.

游城實業股份有限公司
YU-CITY IND. CO., LTD.
24158 新北市三重區新北大道二段 260 號 12 樓
12F, No. 260 Sec. 2, New Taipei Blvd., Sanhong District
New Taipei City, Taiwan (R.O.C.)
TEL: +886-2-29953199
FAX: +886-2-29959918

