

2022 Q3 ————— 2022 Q4

Yu-City Fabric Sample





Heavy Metals Control



Professional Children's Fabric Spunsonor

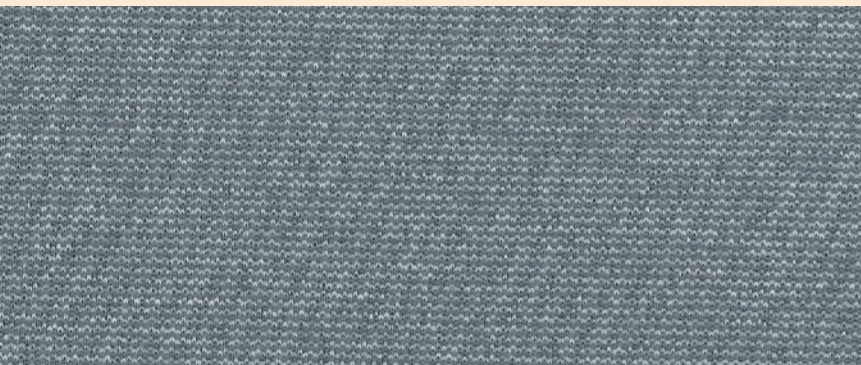
Yu-City selects only non-toxic dyestuff with low concentration of heavy metals for newborn skin. We never compromise on safety and quality. All the fabrics produced by Yu-City are Oeko-Tex Class One certified. This is all you need.

302FR Free

Chemical Free fire retardant fabric is definitely a must for US market, and we can conduct FR test in-house at our own factory in Shenzhen, China.

22KP041





YCTW - 22KE043

CMPSTN : RE-POLY
DESCRIPTION : RE-T/CD100D+RE-CD75D
WIDTH/WEIGHT : 58/60" 290SQM
FINISH : P/D
REMARK : ECO-Friendly



YCTW - 22KE062

CMPSTN : RE-POLY
DESCRIPTION : RE-T/CD75D+RE-T75D
WIDTH/WEIGHT : 58/60" 197SQM
FINISH : P/D
REMARK : ECO-Friendly , Interlock Twill



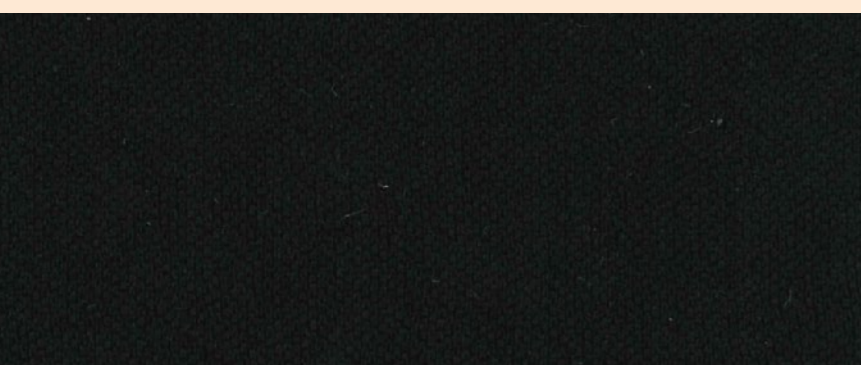
YCTW - 22KB007

CMPSTN : RE-POLY / RE-Bamboo
DESCRIPTION : RE-T75D * RE-Bamboo75D
WIDTH/WEIGHT : 60/62" 255G/Y Dobby
FINISH : P/D
REMARK : Eco-Friendly & Deodorization



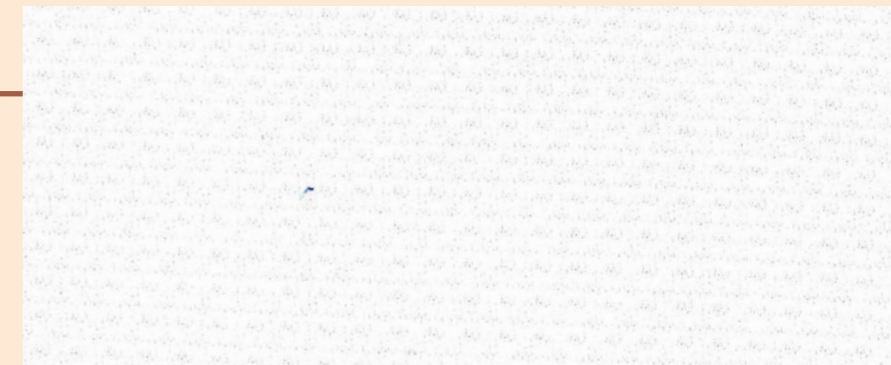
YCTW - 22KB005

CMPSTN : 100% RE-POLY / RE-Bamboo
DESCRIPTION : RE-T100D * RE-Bamboo75D
WIDTH/WEIGHT : 58/60" 240G/Y Dobby
FINISH : P/D
REMARK : Eco-Friendly & Deodorization



YCTW - 22KE061

CMPSTN : 100% RE-POLY
DESCRIPTION : RE-T75D * RE-T110D
WIDTH/WEIGHT : 58/60" 190SQM
FINISH : P/D
REMARK : Eco-Friendly .Interlock Twill



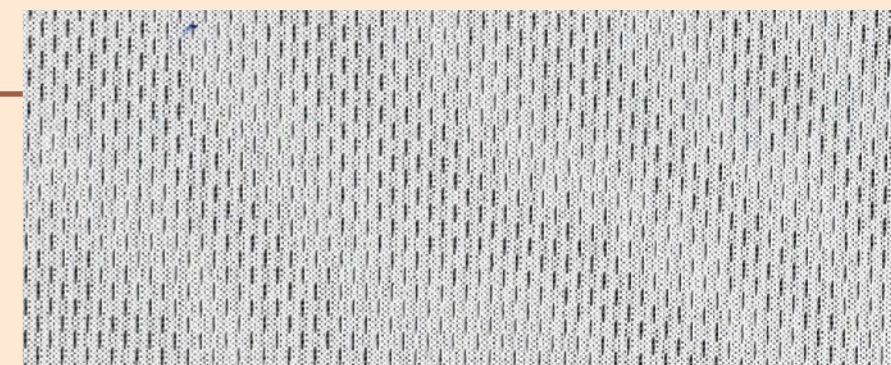
BCTW - 22KL003

CMPSTN : 45% Micax-T 55% Micax-N
DESCRIPTION : Micax-T75D+Micax-N70D
WIDTH/WEIGHT : 59/61" 150SQM
FINISH : P/D
REMARK : Coolness & Dryness



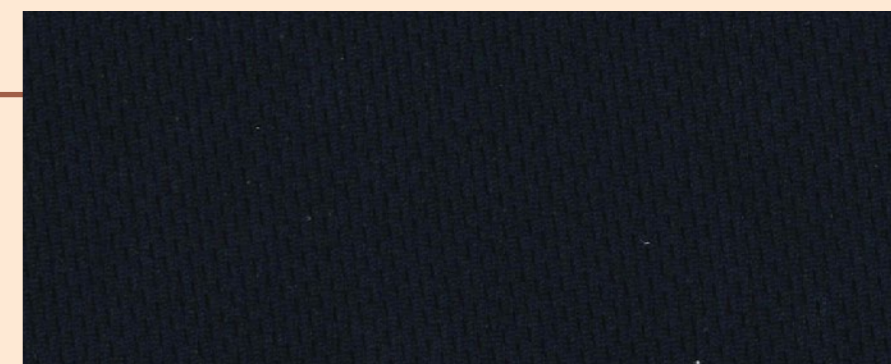
BCTW - 22KA004

CMPSTN : 100% Coolpass Poly
DESCRIPTION : Coolpass Poly 75D
WIDTH/WEIGHT : 67/69" 145SQM
FINISH : P/D
REMARK : Coolness & Dryness



BCTW - 22NS005

CMPSTN : 50% Metallic Poly(Zinc)
 50% Bamboo Charcoal
DESCRIPTION : Metallic-T75D+Bamboo75D
WIDTH/WEIGHT : 59/60" 145SQM
FINISH : P/D **REMARK :** Deodorization



BCTW - 22KA002

CMPSTN : 100% Coolpass-Poly
DESCRIPTION : Coolpass-T75D
WIDTH/WEIGHT : 70/72" 145SQM
FINISH : P/D
REMARK : Coolness & Dryness



YCTW - 22KA003

CMPSTN : 100% Coolpass-Poly
DESCRIPTION : Coolpass-T75D
WIDTH/WEIGHT : 67/69" 150SQM
FINISH : P/D
REMARK : Coolness & Dryness



Wool Like Fabric

Woollike fabrics have become a new trend for high end products. We believe this type of fabrics are perfectly suitable for some particular markets. For those who are looking for fabrics that are super soft to the touch, this is it! We strongly recommend to use woollike fabrics for the stroller canopies or bassinet.



YCTW - 22WK005

CMPSTN : 97%Poly 3%Wool
DESCRIPTION : T180D+T170D*T180D+T/W30'S
WIDTH/WEIGHT : 61" 199SQM
FINISH : P/D
REMARK : Wool Like



YCTW - 22WK006

CMPSTN : 97%Poly 3%Wool
DESCRIPTION : T180D+T170D*T180D+T/W30'S
WIDTH/WEIGHT : 60.5" 196SQM
FINISH : P/D
REMARK : Wool Like



YCTW - 22WK007

CMPSTN : 98.5%Poly 1.5%Wool
DESCRIPTION : T170D+CD150D*T170D+T/W30'S
WIDTH/WEIGHT : 60" 196SQM
FINISH : P/D
REMARK : Wool Like



YCTW - 22WK008

CMPSTN : 98.5%Poly 1.5%Wool
DESCRIPTION : T170D+CD150D*T170D+T/W30'S
WIDTH/WEIGHT : 63.5" 194SQM
FINISH : P/D
REMARK : Wool Like



YCTW - 22WE043

CMPSTN : 100% RE-POLY & CD
DESCRIPTION : RE-T/CD300D * RE-CD300D
WIDTH/WEIGHT : 58/60" 174SQM
FINISH : P/D
REMARK : Eco-friendly . Wool like . 4-Way . Twill

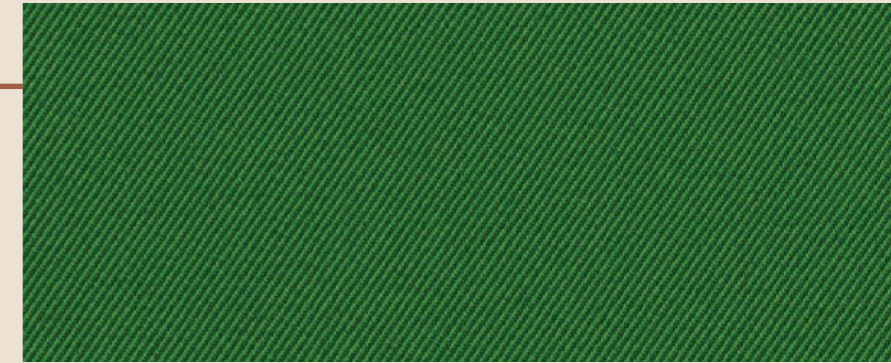
YCTW-22WB003

CMPSTN : Poly / Bamboo Charcoal
DESCRIPTION : T180D*Babboo 300D
WIDTH/WEIGHT : 58/59" 194SQM
FINISH : P/D
REMARK : Deodorization



YCTW-22WB004

CMPSTN : Poly / Bamboo Charcoal
DESCRIPTION : T75D*Babboo 300D
WIDTH/WEIGHT : 59/60" 180SQM
FINISH : P/D
REMARK : Deodorization



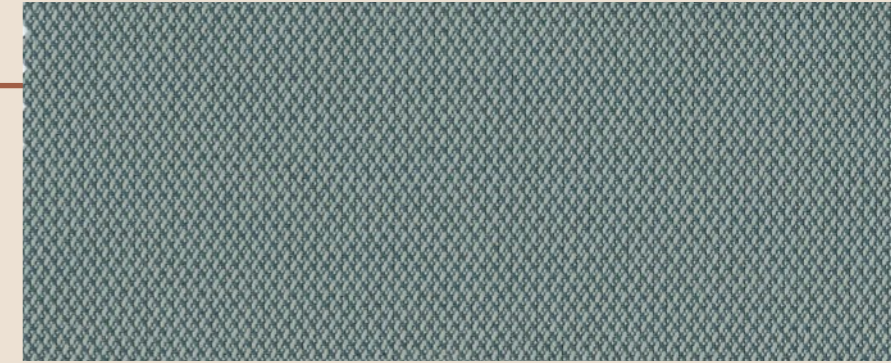
BCTW - 22WA001

CMPSTN : POLY / Coolplus
DESCRIPTION : T75D*Coolplus150D
WIDTH/WEIGHT : 59/60" 180SQM
FINISH : P/D
REMARK : Quick Dry



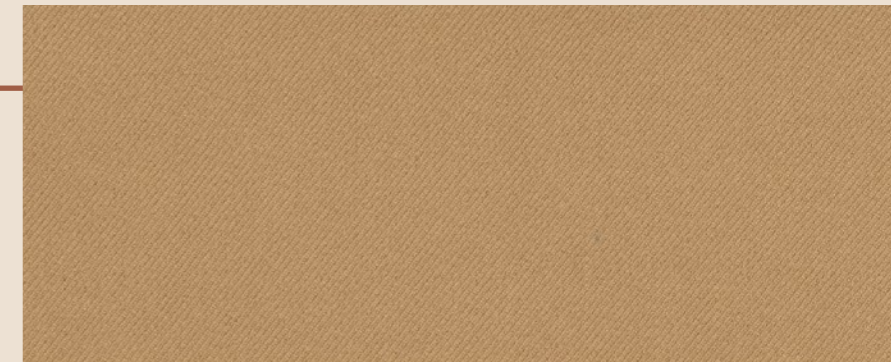
YCTW - 22WE042

CMPSTN : 100% RE-Poly
DESCRIPTION : RE-T150D*RE-T/CD300D
WIDTH/WEIGHT : 60" 140SQM
FINISH : P/D
REMARK : Eco-friendly . Dobby



YCTW - 22WE041

CMPSTN : 100% RE-Poly
DESCRIPTION : RE-T75D*RE-T150D
WIDTH/WEIGHT : 58" 156SQM
FINISH : P/D
REMARK : Eco-friendly . Twill





22NS006

Dual Circulation

Yu-City team implements a “dual circulation” strategy through setting up and connecting two comprehensive supply chain systems in Taiwan and China. We get to take advantages of the vertical integration from two regions in order to provide our clients with the best possible option for their particular needs.

Taiwan Collection

The main advantage of fabrics being produced in Taiwan is that our Taiwanese mills have capability to offer a wide selection of multi-functional fabrics. Fast and precise

China Collection

While our Chinese mills can offer competitive prices. Sourcing and serving locally allows us to shorten the lead time.

22KP051



22NS004
22KP051

Advisory Support

We share the latest industrial trends with our clients. We are capable of product marketing, story telling and business researching. Being a supplier is not our goal. What we are looking for is to be a part of your team. This is more than one-stop service, we cover all.

Full Services

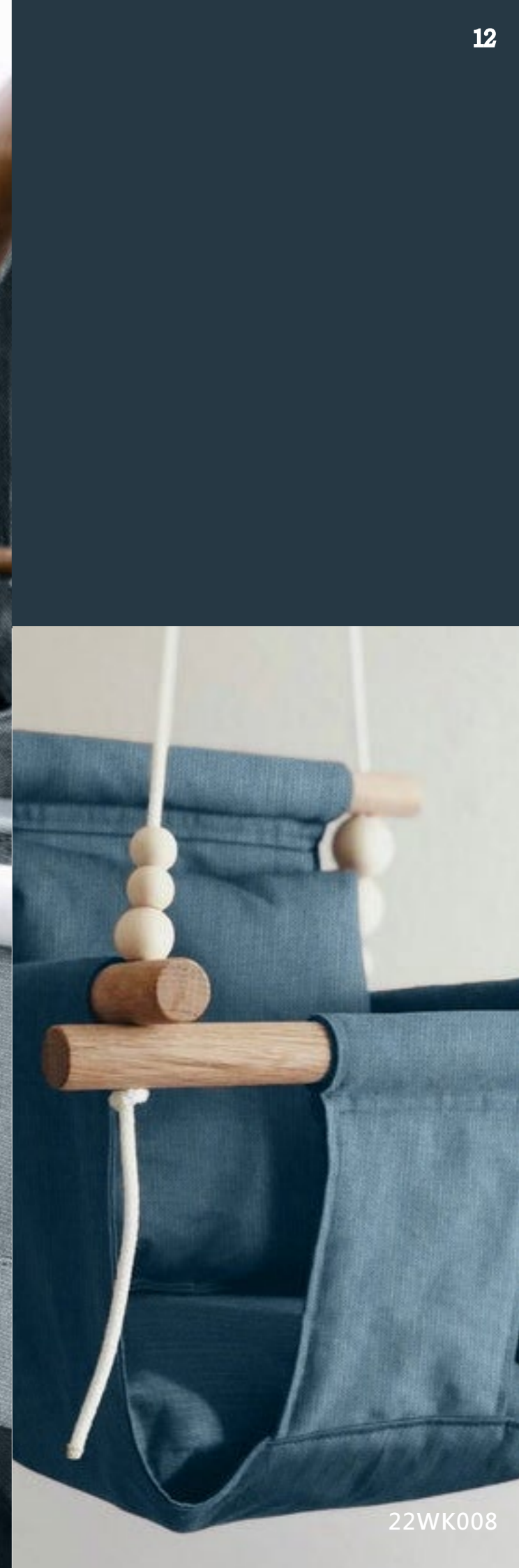
We share the latest industrial trends with our clients. We are capable of product marketing, story telling and business researching. Being a supplier is not our goal. What we are looking for is to be a part of your team. This is more than one-stop service, we cover all.



22KE044



22KE043



22WK008



Yu-City Not Just Fabric, But Design

游城實業股份有限公司

YU-CITY IND. CO., LTD.

24158 新北市三重區新北大道二段 260 號 12 樓

12F, No. 260 Sec. 2, New Taipei Blvd., Sanchong District

New Taipei City, Taiwan (R.O.C.)

TEL: +886-2-29953199

FAX : +886-2-29959918

